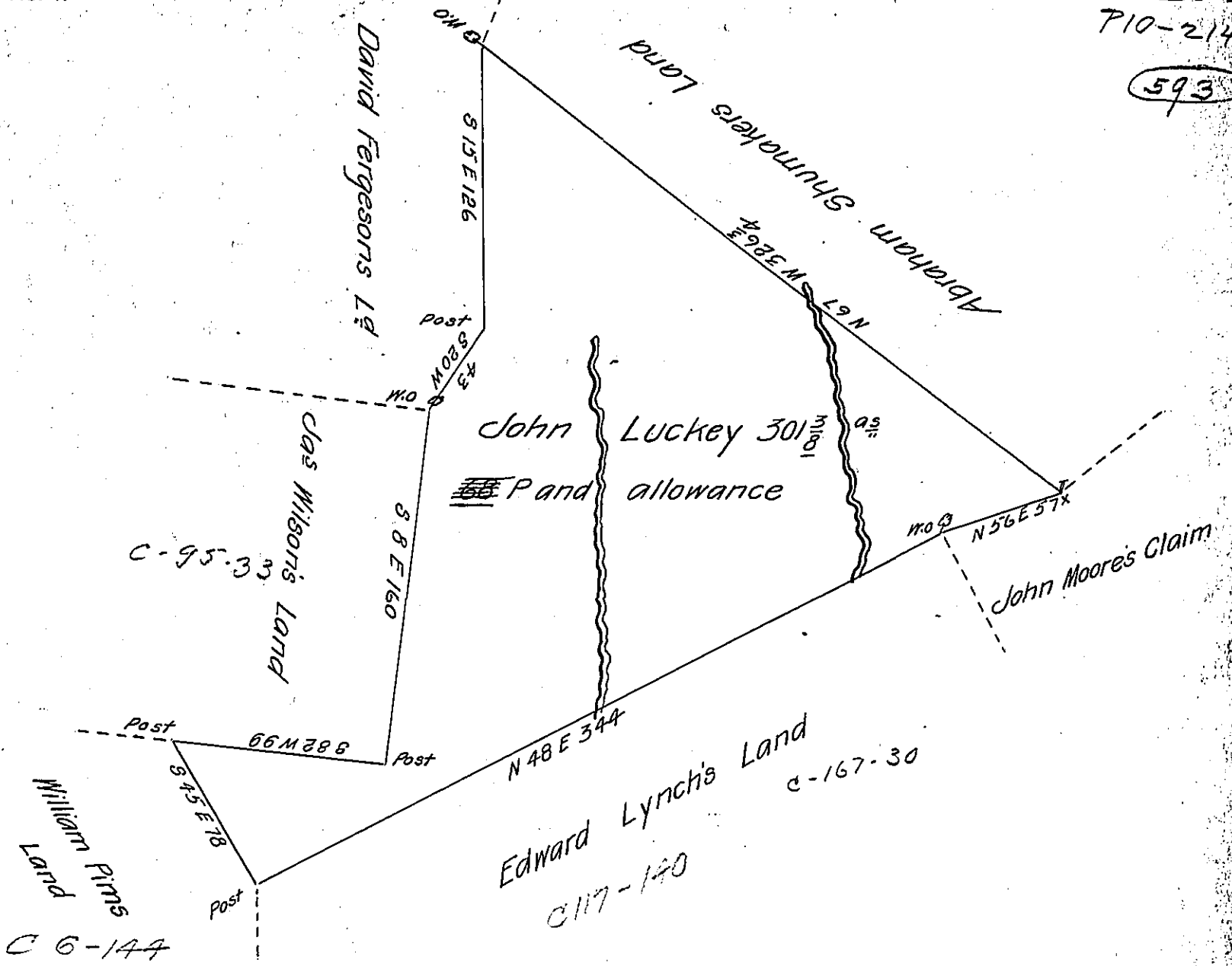


2d Pat. for Part = { C 149-187
H 48-597

277
P10-214
593



In Pursuance of a Warrant dated July 21st 1786 was Survey'd for John Luckey the above described tract of land, Containing three hundred and one acres of sixty eight perches with an allowance proportioned to Six P. Cent. Situate on the Waters of Plumb Creek adjoining land of Edward Lynch and others in Pitt Township Westmoreland County. Survey'd August 30th 1786.

P=John Moore D.S.

To John Lukens Esq. S.G.

IN TESTIMONY that the above is a copy of the original remaining on file in the Department of Internal Affairs of Pennsylvania, made conformably to an Act of Assembly approved the 16th day of February, 1833, I have hereunto set my Hand and caused the Seal of said Department to be affixed at Harrisburg, this twenty second day of August 1905.

Joac P. Penning
Secretary of Internal Affairs.